

Product & Services

Catalog



Manufacturer & Rental Service of
SCAFFOLDING | SHUTTERING | ACCESSORIES



**INNOVATIVE SHUTTERING &
SCAFFOLDING PRIVATE LIMITED**

Work

Innovative Shuttering & Scaffolding Private Limited specialize in **manufacturing and rental service** of Scaffolding, Shuttering & Accessories.

We always provided products that calls for a high degree of skills, high tech machinery and thorough knowledge of Scaffolding & Shuttering workshop.

Vision

Providing Best Product and Services
To enhance Our clients Capacity and Capability

Mission

Design, Development and Implementation Of World Class
Techniques to achieve World Class Quality and Productivity

We established in 2008, our journey began with a vision to create groundbreaking solutions that transform the way people live and work. We pride ourselves on providing our customer with the highest quality and values in every order Innovative Shuttering & Scaffolding Private Limited has wide knowledge, experience, and capabilities required to meet and exceed Scaffolding, Shuttering needs of large and small domestic and industrial companies. Our endeavours are directed towards achieving the maximum level of client satisfaction and therefore we try to design products as per their demand and suggestion we manufacture supply precision Scaffolding, Shuttering & Accessories..



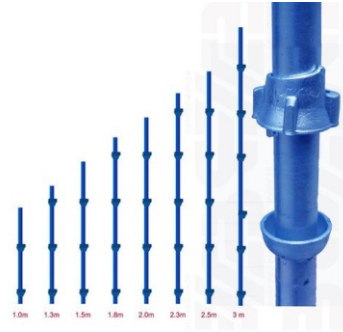
About Us

Plant **Capacity & Facilities**

- Owned plant having 80000 Sq Feet area
- 24 hours Power back up for complete plant
- Well Experienced and dedicated team
- Residents engineers in plant premises
- Well addressed customer customized requirement as per layout.
- Well equipped Tool Room.
- In house production facility having equipments :- Hydraulic Tai rod machine ,Thread Rolling Machine, Press Shop, Weld Shop, Punching Machine, Drilling etc.
- Having a wide range of customers bank for sale targets.
- Growth oriented energetic and committed team to active company target of production, quality, cost, safety and environment.

CUPLOCK VERTICALS/STANDARD

Cup lock vertical is a vertical post with cup-shaped connectors attached at regular intervals. These cups provide a secure and efficient way to connect horizontal ledgers creating a stable framework for workers to access higher levels of a structure.



CUPLOCK HORIZONTAL/LEDGER

Cup lock horizontal is a horizontal member with cup-shaped connectors at both ends, allowing for quick and secure connections to cup lock verticals. Cup lock horizontals are available in various lengths to suit different scaffold configurations. They are designed to provide horizontal support and distribute the load evenly across the scaffolding structure.



U JACK/STIRRUP HEAD

A U jack is a vertically adjustable device used to provide stability and support to scaffolding structures on uneven or sloping surfaces. This design allows for easy height adjustment by simply rotating the threaded rod.

BASE JACK

Base jacks are typically placed at the base of scaffolding verticals and are used to level and stabilize the scaffold. They can be adjusted to accommodate variations in ground levels, ensuring a secure and level working platform for construction workers.



TELESCOPIC PROP JACK

A telescopic prop jack, also known as an adjustable steel prop, is a versatile and adjustable support device used in construction and form work applications. It consists of an inner tube and an outer tube that can slide and lock into various height positions.



ACROW SPAN

Acrow span, also known as an adjustable span. It is designed to provide horizontal support between two vertical structures or surfaces. It consists of two or more tubular sections that can slide within each other, allowing for adjustable length.



MS SQUARE PIPE JALI



Walkway jalis are available in different sizes, configurations, and load-bearing capacities to suit specific applications. They can be customized to fit specific dimensions or layouts, ensuring a seamless integration into the overall structure.

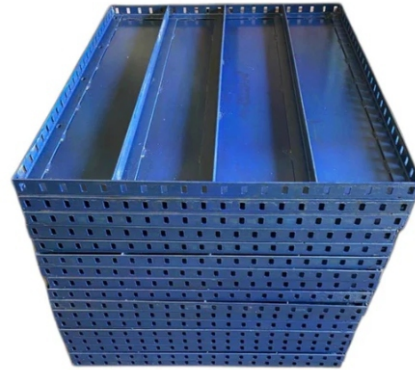
WALKWAY PLANK/BOARD

A walkway board, also known as a walkway plank or scaffold board, is a flat, sturdy, and portable platform used to create safe walking surfaces in construction. Walkway boards are designed to provide a stable and secure surface for workers to walk on, especially in elevated or hazardous environments.



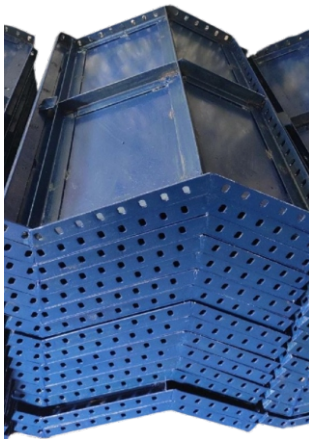
SHUTTERING/WALLFORM PLATE

Wall form shuttering plates, also known as formwork panels, Shuttering plates are designed to be assembled a sturdy and stable structure that can withstand the pressure exerted by the wet concrete during the pouring and curing process. They are available in various sizes, thicknesses, and configurations to accommodate different wall dimensions and construction requirements.



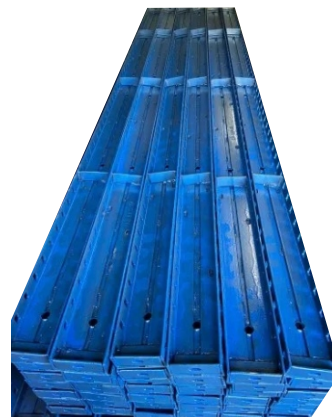
HAUCH PLATE

Haunch plates, also known as connection plates or joint plates, are structural components used to connect and reinforce the junction between two structural elements, typically beams and columns. They are commonly made of steel and are designed to provide additional strength and stability to the connection.



BRACKET PLATE

Bracket plates, also known as support brackets or mounting plates, are structural components used to provide support and stability to various objects or structures.



MS SOLDIER

Soldiers on shuttering act as vertical reinforcements, providing additional support and stability to the formwork or shuttering system during concrete pouring. They help maintain the desired shape and alignment of the structure.

WOODEN PLY BOARD

Shuttering ply, also known as formwork plywood, is a type of plywood specifically designed for use in construction formwork or shuttering applications. It is made by bonding multiple layers of high-quality veneer sheets together using a strong adhesive.



WOODEN BATTEN/RUNNER



Wooden battens in shuttering play a crucial role in ensuring the proper alignment and stability of the formwork panels. They help support the weight of the wet concrete during the pouring process and prevent bulging or deformation of the formwork.

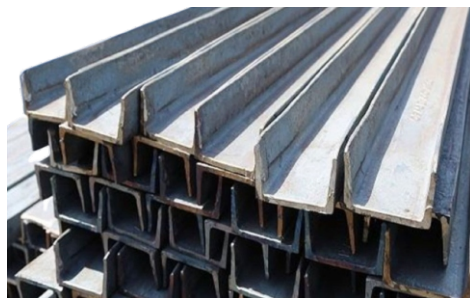


MS PIPE

MS pipes, short for Mild Steel pipes, are cylindrical tubes made from mild steel, which is a type of low-carbon steel. They are widely used in various industries and applications due to their versatility, strength, and affordability.

MS CHANNEL

MS channels, also known as Mild Steel channels or C-channels, which is a low-carbon steel alloy. They have a distinct "C" shape, resembling a rectangular tube with flanges extending outward on both sides. MS channels are widely used in construction, manufacturing, and structural applications.



ISMB

ISMB beams are made from mild steel and are characterized by their I-shaped cross-section. They have a wider flange (the top and bottom horizontal sections) and a narrower web (the vertical section connecting the flanges). This design provides excellent load-bearing capacity and structural stability.



TIE ROD

In shuttering or formwork, a tie rod refers to a steel rod or bar used to provide structural stability and support to the formwork system. It is an essential component that helps maintain the integrity and alignment of the formwork during the pouring and curing of concrete.



PROPSLEEVE

Prop sleeve refers to a component used to connect and stabilize adjustable props. It is typically a cylindrical metal sleeve with internal threading.

BINDING WIRE

In construction, binding wire is often used to secure reinforcement bars (rebars) in concrete structures, ensuring they remain in their intended positions during the concrete pouring and curing process. It is also used for bundling electrical wires, attaching fencing or mesh panels, and securing various components in scaffolding systems.



JOINT/SPIGOT PIN

Spigot pin in scaffolding is a cylindrical component used to connect and align coupler verticals/standards. It provides a secure joint, ensuring stability and preventing the coupler verticals from slipping or moving out of position. Spigot pins are essential for the efficient assembly and disassembly of scaffolding structures, contributing to the overall safety and integrity of the system.



TOE BOARD

In shuttering or formwork, a tie rod refers to a steel rod or bar used to provide structural stability and support to the formwork system. It is an essential component that helps maintain the integrity and alignment of the formwork during the pouring and curing of concrete.



MS SHIKANJA



WING NUT



ANCHOR NUT



GHUGHU NUT



GHUGHU MACHINE



JACK NUT



CUP NUT



UNIVERSAL JACK ROD



SWIVEL/MOVING COUPLER(MSSHEET)



RIGHT ANGEL/FIX COUPLER(MSSHEET)



SWIVEL/MOVING COUPLER(FORGED)



RIGHT ANGEL/FIX COUPLER(FORGED)



SLEEV COULER



BRC COUPLER



BEAM CLAMP



BOTTOM CUP



TOP CUP



PROP NUT



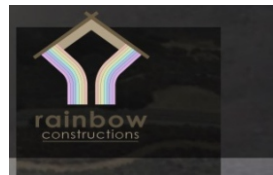
PROP SLEEV



WATER STOPPER



An Alliance Group Company



SHRIRAM OZONE



our all products are **best quality** and **exported** in many **countries** by us & our customers

Innovative Shuttering & Scaffolding Private Limited



INNOVATIVE SHUTTERING & SCAFFOLDING PRIVATE LIMITED

+91 8447756003,9109101995 info@innovativeshuttering.com
Opp. Cosmos Casting, KH No. 284/1,2,283/1,6, Tendua
Main Road, Hirapur, Tendua IID, Raipur, Chhattisgarh, 492099
www.innovativeshuttering.com